



ANALYZING THE CRIME DATA BASE





HIT & RUN

HIT & RUN

- Hit-and-run collisions are those in which at least one person involved in a crash flees the scene before offering any (or sufficient) information or aid to the other involved person(s) or fails to properly report the crash.

Victim Characteristics

- Pedestrians account for the majority of people killed in hit-and-run crashes
- Victim age was a factor in whether or not the driver flees the scene.

Victim Characteristics

- Fatally injured pedestrians as fatally under the age of 6 or over age 80 were half as likely to be victims of hit-and run collisions injured pedestrians in other age groups.
- Males make up around 70 percent of hit-and-run victims in single car/ single pedestrian crashes.

Crash Characteristics

- MacLeod et al. (2012), in their examination of single vehicle/single pedestrian fatal crashes, found **fleeing to be nearly 4.4 times more likely between midnight and 4 a.m.** compared with those between 8 a.m. and 11:59 a.m.
- Pedestrian-involved fatal hit-and-run crashes **are less than half as likely to occur in daylight** (Solnick & Hemenway, 1995).

Crash Characteristics

- The increase seen at night is thought to be because lower visibility increases the chance of escape. Also, nighttime drivers may be involved in more risky behaviors such as driving while intoxicated (DWI) or without a license, which may in turn make them more likely to decide to flee the scene of a crash.

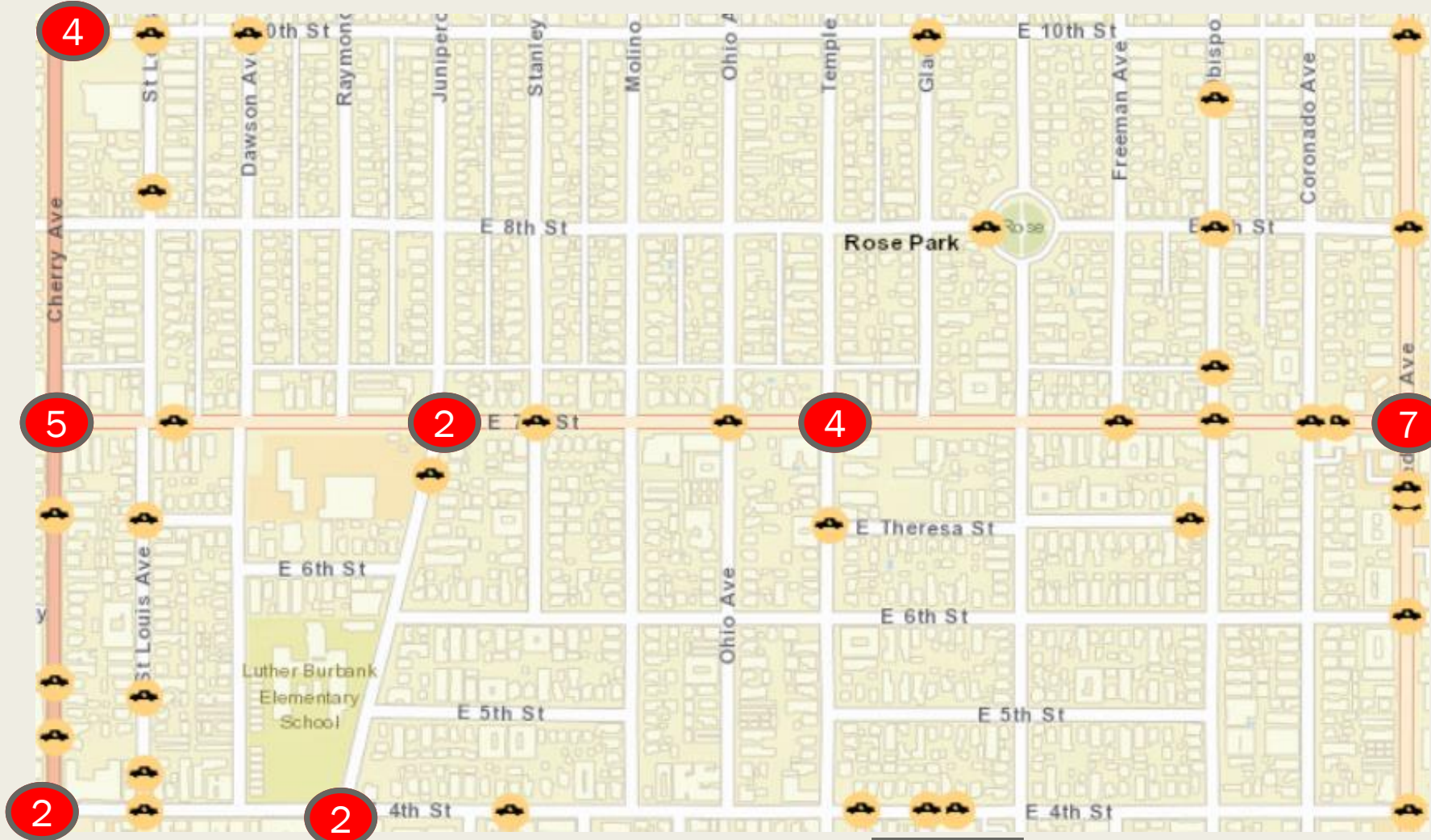
Crash Characteristics

- Fatal hit-and-run crashes are more likely on roads with lower speed limits (MacLeod et al., 2012; Solnick & Hemenway, 1995).
- Hit-and-run crashes are also more common on lower-speed sections of roadways such as curved roads, bends, overpasses and ramps (Tay, Barua, & Kattan, 2009; Tay et al., 2008).
 - *These may be areas that pedestrians are more likely to cross.*

TOTAL NUMBER OF INCIDENTS IN ROSE PARK = 64

Boundaries-
Redondo to
Cherry; 4th to
10th

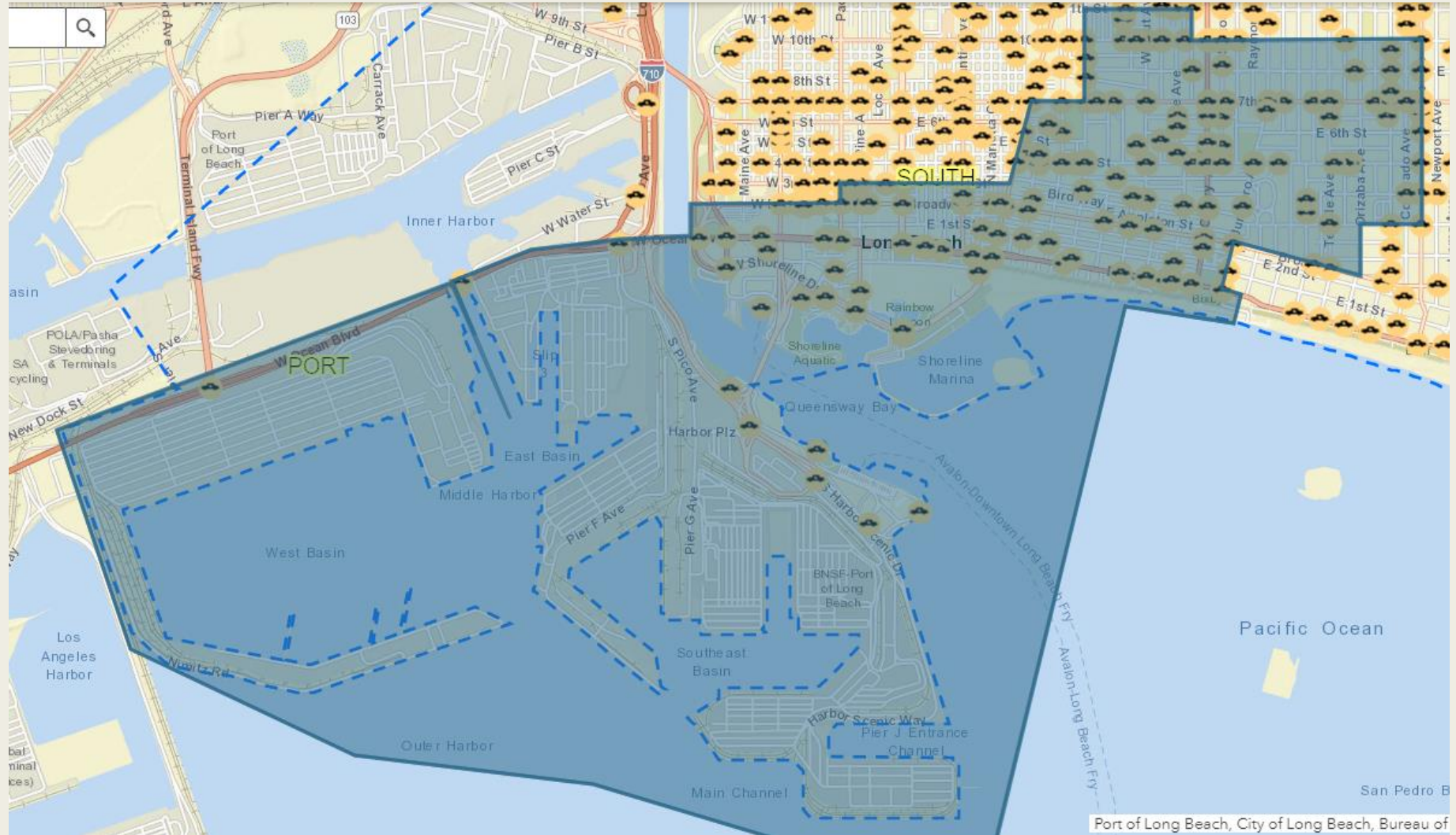
Time Frame-
7/23/2018 to
1/17/2019



Smart
& Final

Ralphs

TOTAL NUMBER OF INCIDENTS IN DISTRICT 2= 238



LONG BEACH= 1,585

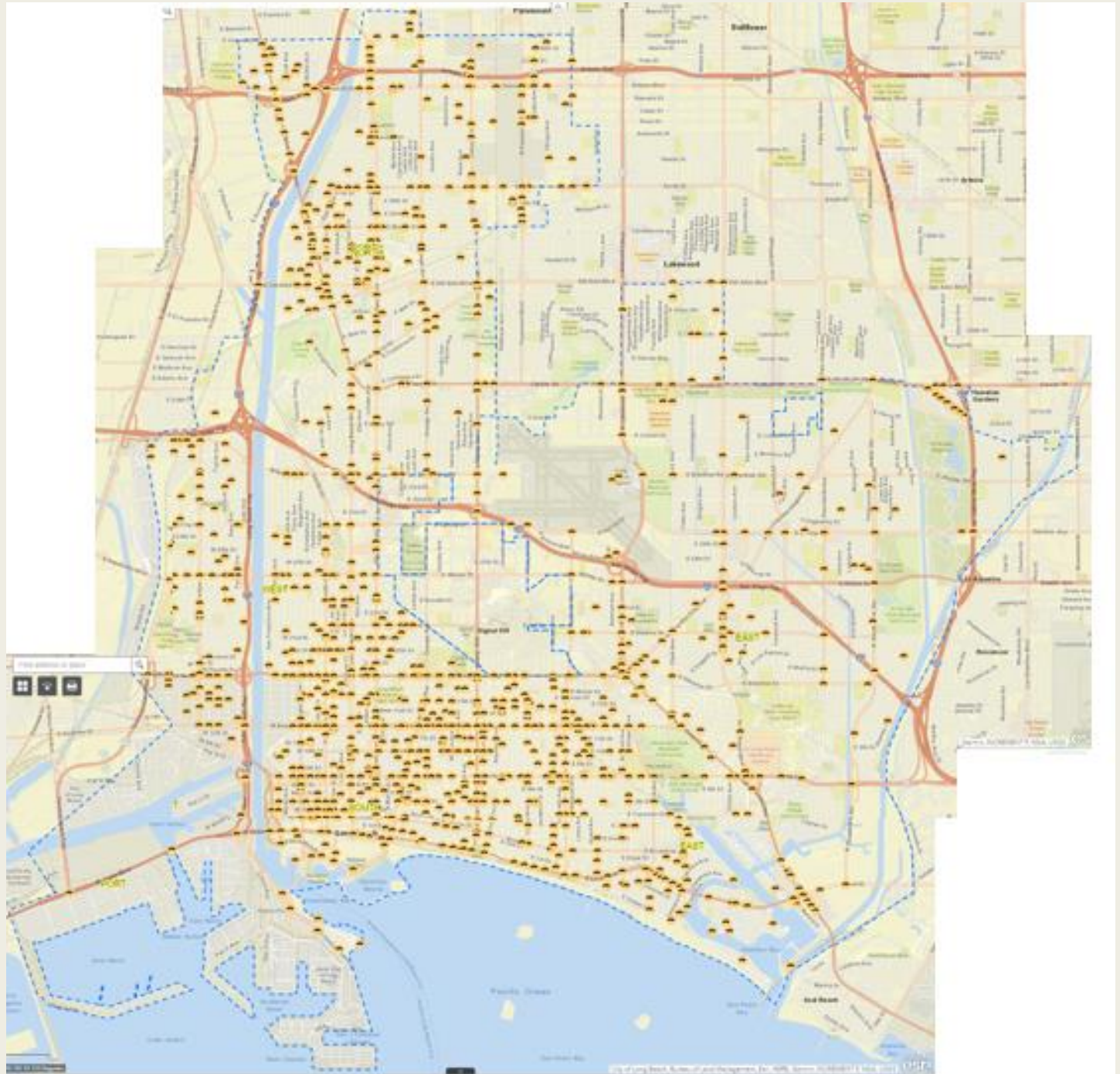
DISTRICT 2= 238

-15% OF LB

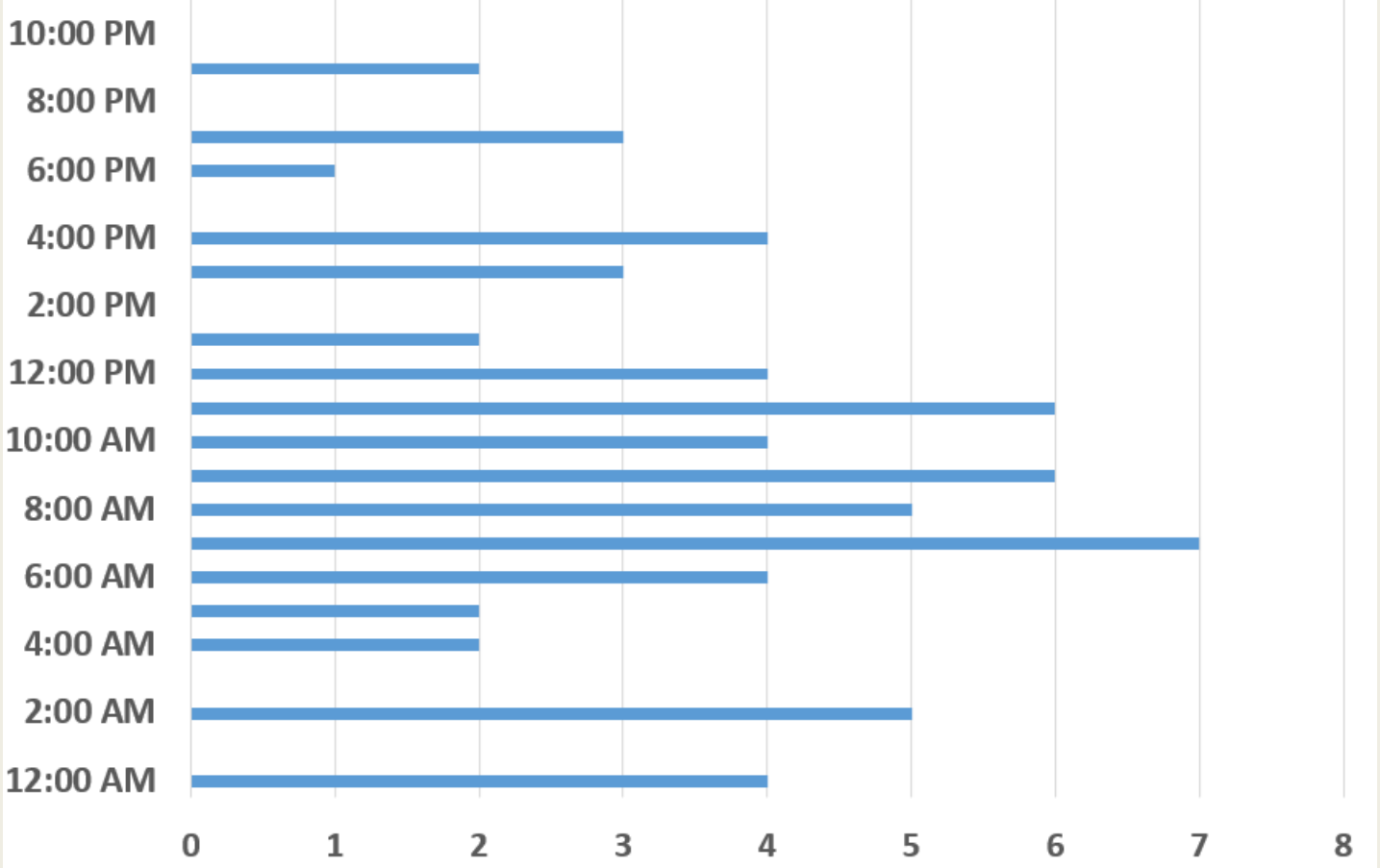
ROSE PARK= 64

-26.9% OF DIST 2

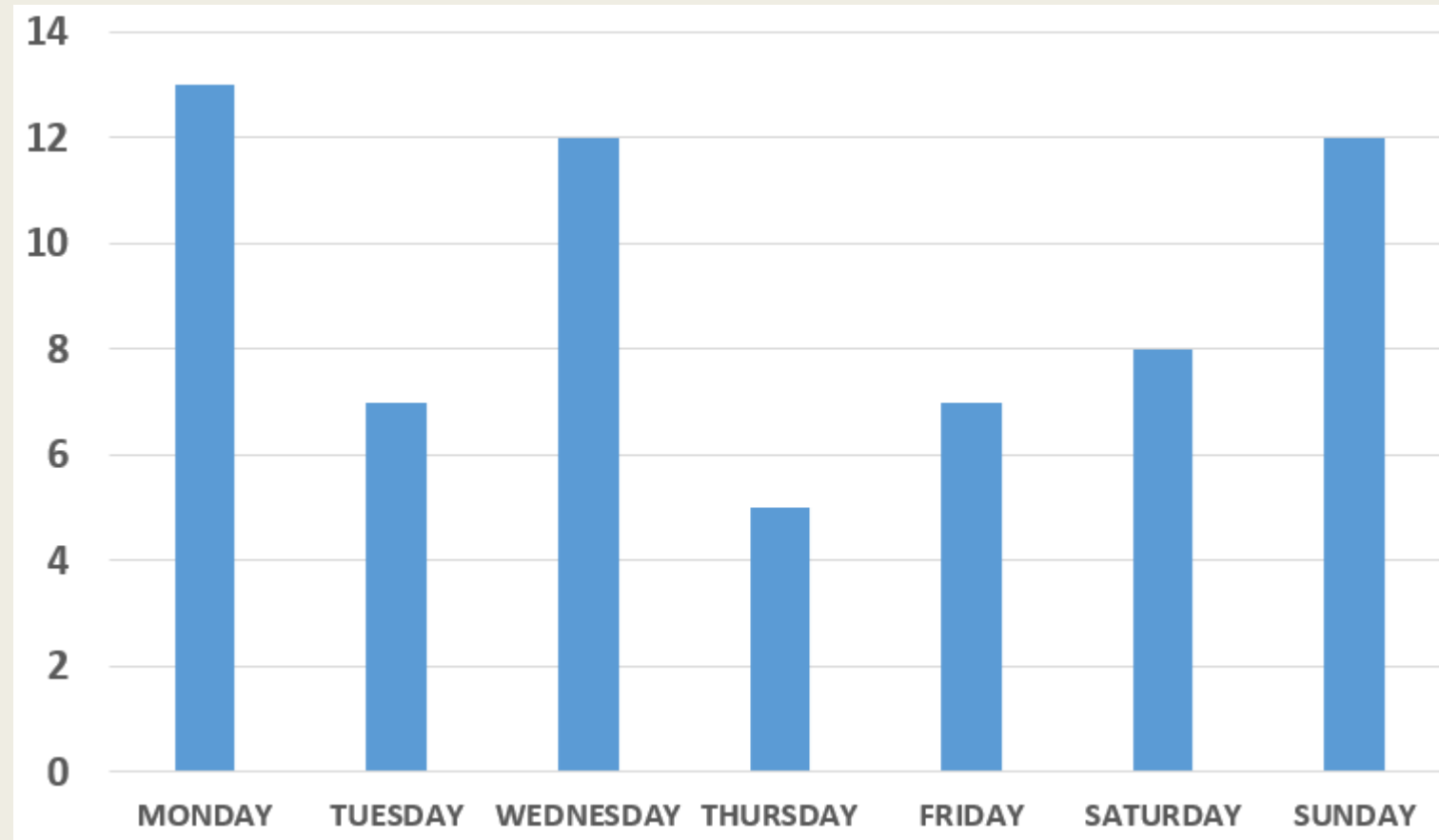
-4% OF LB



HIT AND RUNS BY TIME OF DAY (REPORTED)



HIT AND RUNS BY DAY OF THE WEEK



Conclusions

- Be extra careful at night
 - *Wear appropriate clothing*

OSHA Vest



HI-VIS

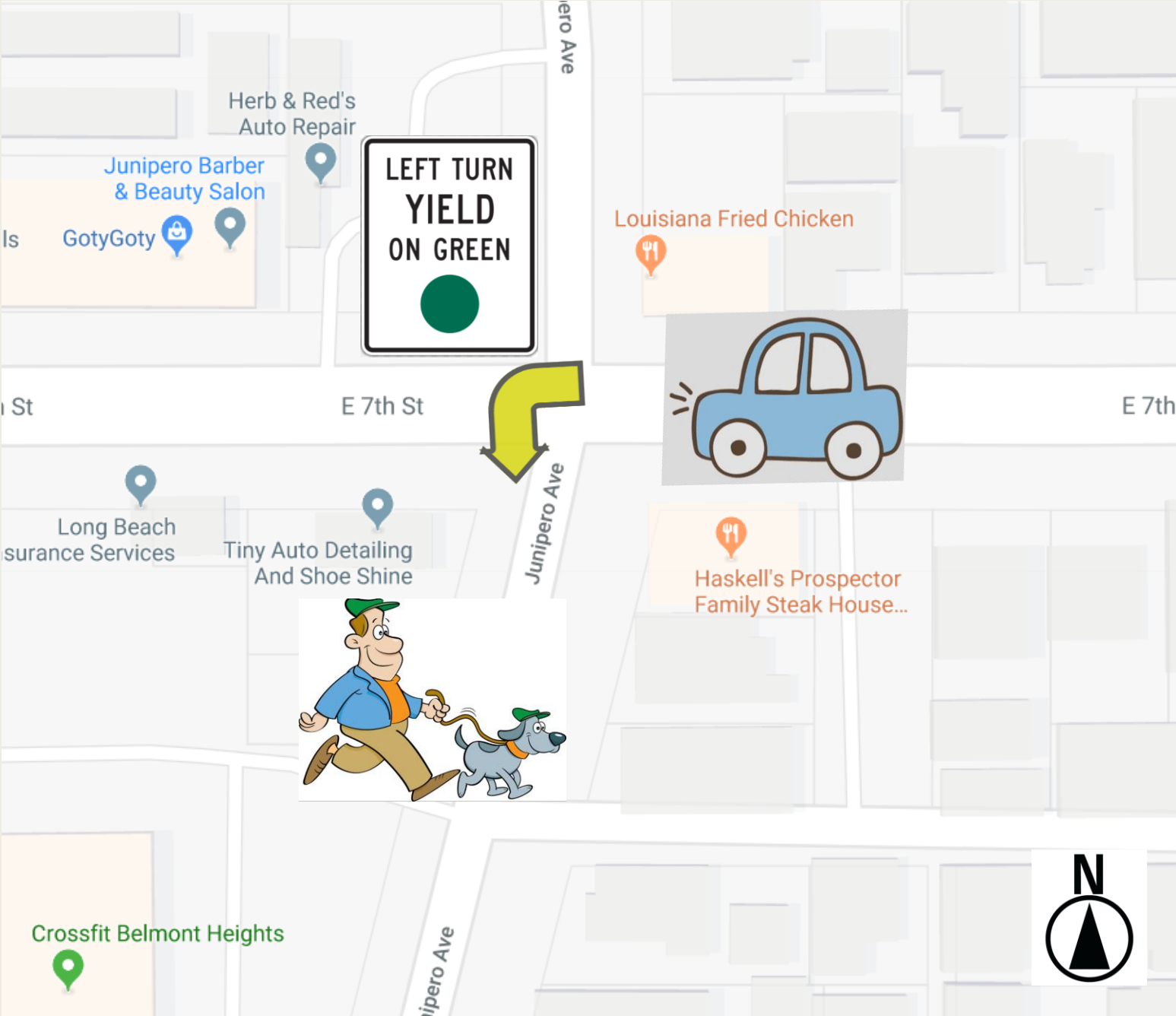






Conclusions

- Be cautious during periods of poor weather/visibility
- Be alert, be defensive
- Never cross between parked cars
- Lead by example and teach your children to be cautious and alert pedestrians.



LEFT TURN
YIELD
ON GREEN

E 7th St

Junipero Ave

E 7th

Louisiana Fried Chicken

Junipero Barber
& Beauty Salon

Herb & Red's
Auto Repair

GotyGoty

Long Beach
Insurance Services

Tiny Auto Detailing
And Shoe Shine

Haskell's Prospector
Family Steak House...

Crossfit Belmont Heights



References

- MacLeod, K. E., Griswold, J. B., Arnold, L. S., & Ragland, D. R. (2012). Factors associated with hit-and-run pedestrian fatalities and driver identification. *Accid Anal Prev*, 45, 366- 372. doi:10.1016/j.aap.2011.08.00
- Solnick, S. J., & Hemenway, D. (1995). The hit-and-run in fatal pedestrian accidents: victims, circumstances and drivers. *Accid Anal Prev*, 27(5), 643-649.
- Tay, R., Barua, U., & Kattan, L. (2009). Factors contributing to hit-and-run in fatal crashes. *Accid Anal Prev*, 41(2), 227-233. doi:<https://doi.org/10.1016/j.aap.2008.11.002>